

# SMF6

16 mm, flat, low profile, waterproof and tamper-resistant construction.

SMF6 is a non-illuminated touch metal piezo switch made without moving mechanical parts, one of the most durable products. SMF6 can be fully customized and is ideal for use in even the harshest environments, such as the oil & gas and chemical industry, public transport, aviation, and so on.

## Key Characteristics:

- Aviation Grade Aluminum or Stainless Steel 303 standard (304, 316 optional)
- Anodized Aluminum in silver, black, red, green, blue or gold finishes
- Laser Engraving or Anodized printing optional



## Electrical Data

Switch Function	N.O. Momentary (N.C. optional) Prolonged, Toggle (On/Off), Continuous as well as Programmable, Timer, Slide, Self Diagnostic, and WiFi Enabled optional
Switch Voltage	0-24 AC/DC
Switch Current	0.2 A standard (up to 1 Amp optional)
Rated Breaking Capacity	Power Dissipation < 5 Watt
Operating Cycles	> 50,000,000
Switch Resistance OFF	> 20M Ohm
Switch Resistance ON	< 5 Ohm
Switch Capacitance	10 pF
Switch On Duration	Up to 20 sec
Contact Configuration	Free Polarity

## Mechanical Data

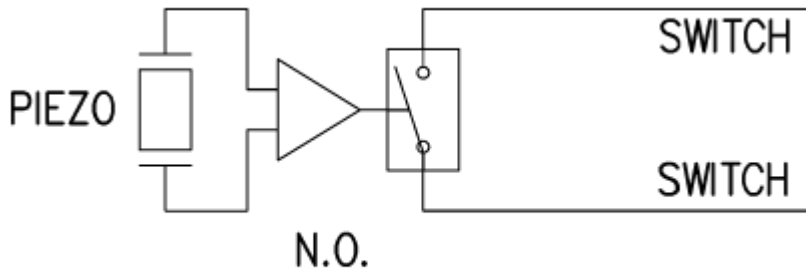
Housing Materials	Aluminum 6061 T651, Stainless Steel (Type 303, 304 or 316) or Plastic
Actuating Force	2-5 Newtons
Non-Illuminated	Polycarbonate
Connection	22 AWG standard, (pin, tab or terminal blocks optional)
Shock Protection	IK 10
Fastening Torque	2.5 Nm

## Environmental Data

Operating Temperature	-20°C to +75°C
Storage Temperature	-40°C to +125°C
IP Protection	IP69 K

## Electrical Diagram

---



## Technical Drawing

---

