

Scale 1:1

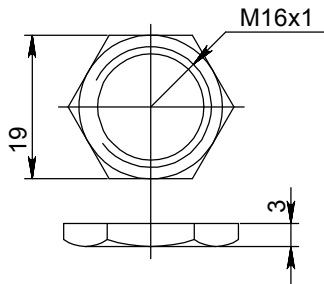
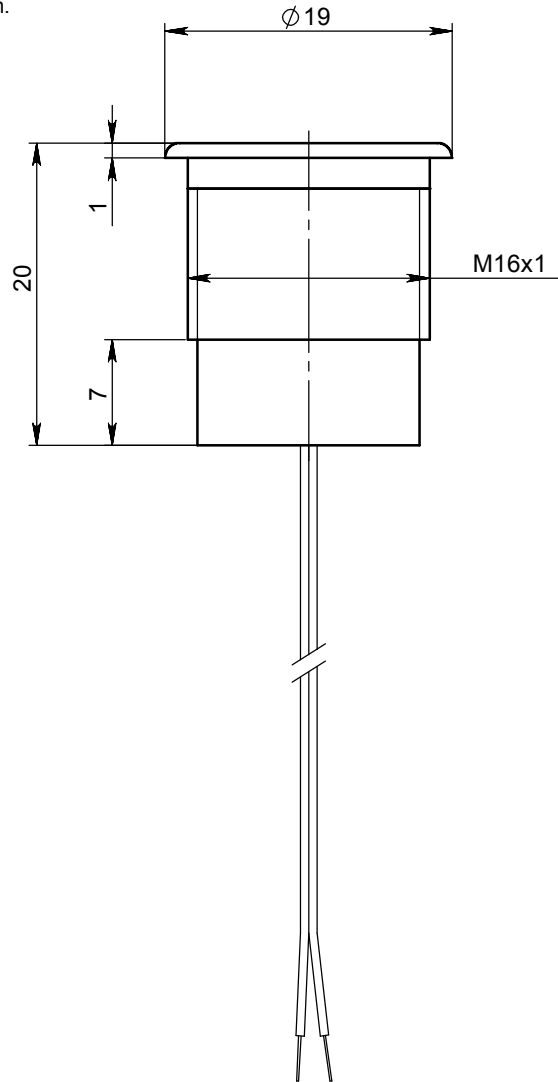
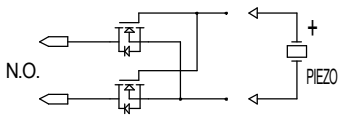


1 SPECIFICATIONS

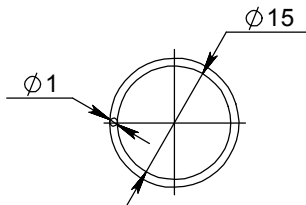
HOUSING MATL.: ALUMINIUM 6061 T651
 CONNECTION: 2 WIRES CABLE RED/RED, 24 AWG, LENGTH 300 ± 10mm.
 SWITCHING VOLTAGE: 1-24 V AC/DC
 SWITCHING CURRENT: 0.2 A
 SWITCH RESISTANCE "ON": <20 Ohm
 SWITCH RESISTANCE "OFF": >5 MOhm
 ACTUATION FORCE: 3-5 N
 MAKE IMPULSE TIME: 125-300 mSEC.
 OPER. AND STOR. TEMP.: -40 °C TO 125 °C

2 FINISH

ANODISE THICKNESS: 10-15 micron
 ANODISE COLOR: NATURAL



NUT
 Material: BRASS
 (Ni coated)



O-RING
 Material: NBR
 (Acryliannitrile-butadiene rubber)

		Tolerance ±0.1				
Itemref	Quantity	Title/Name, designation, material, dimension etc			Article No./ Ref.	
		Designed by Lilya Tayzland Approved By lilyat at 03 לירפא 14 17:35	Filename 19020285_901_060	Draw. Num. 901_060	Scale 2:1	Draw.Date 03.04.2014
		SMF6AAW1N NATURAL HOUSING, WIRES				
		Cat. Num. 19020285		Edition 1		Sheet 1/1



Baran House 8 Omarim St.
 Omer Industrial Area 84965 Israel
 Tel. 972-8-6200020 fax 972-8-6200021