

# 4: Handles / Feet



## 4.1 Handles

E | 4\_2

4.1.1 Universal Carrying Handles

E | 4\_2

4.1.2 U-Handles Aluminium, Anodised

E | 4\_3

4.1.3 Die Cast Aluminium Handles

E | 4\_3

4.1.4 Small Component U-Handle, Steel

E | 4\_4

## 4.2 Feet

E | 4\_5

4.2.1 Case Feet Type 15

E | 4\_5

4.2.2 Case Feet Type 14

E | 4\_5

4.2.4 Push in Feet

E | 4\_6

4.2.6 Bumpon (Self adhesive Feet)

E | 4\_6

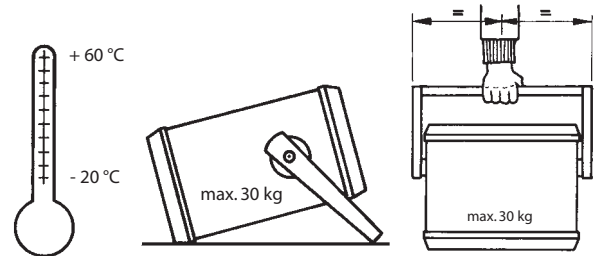
# 4: Handles / Feet



## 4.1 Handles

### 4.1.1 Universal Carrying Handles

- For portable units up to 6 U
- Sturdy and light
- Easy assembly
- Carrying capacity up to 30 kg
- Lock in increments of 30°
- Operating temperature -20°C to +60°C
- Fixing material included
- **Scope of delivery:**
  - 2 side parts assembled
  - 2 raised cross recessed screws M4 x 16
  - 2 raised cross recessed screws M5 x 16
  - 2 press-in nuts M4
  - 4 caps
- Cross bar see 4.1.1.1



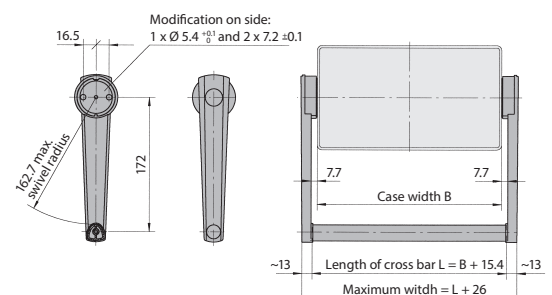
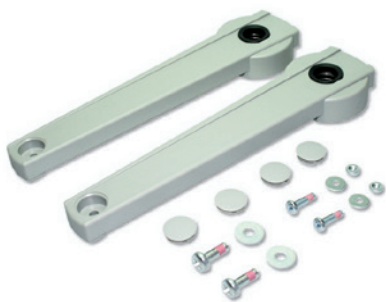
### 4.1.1 Universal Carrying Handles

Description	Material	Colour	Part-No.
Side arm assembled	Glass fiber reinforced plastic	Black (Ral 9005)	61-160-60

#### 4.1.1.1 Cross Bars

- Aluminium, coated (sofffeel)
- **Scope of delivery:**
  - 1 handle extrusion

Description	Front	Length L	Part-No.
Handle extrusion	M5 x 15	266.4	66-308-20
	M5 x 15	373.1	66-308-21
	Ø 4.2 mm	1000	66-308-40



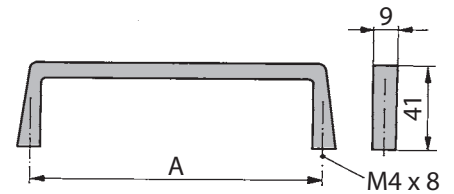
# 4: Handles / Feet

## 4.1.2 U-Handles Aluminium, Anodised



### 4.1.2 U-Handles Aluminium, Anodised

- Anodised aluminium extrusion
- Width: 9 mm
- **Scope of delivery:**
  - 1 aluminium handle
- Per handle 2 screws are needed, see below

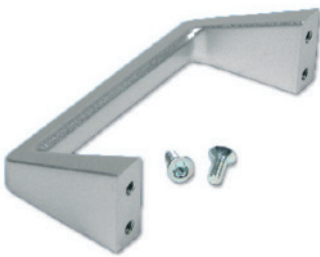


For Case Height	A		Colour	Part-No.
	mm	inch		
2 U	44.5	1.75	Clear anodised	60-527
			Black anodised	60-527-6
3 U	88.9	3.50	Clear anodised	60-528
			Black anodised	60-528-6
4 U	133.4	5.25	Clear anodised	60-529
			Black anodised	60-529-6
5 U	177.8	7.00	Clear anodised	60-530
			Black anodised	60-530-6
6 U	222.3	8.75	Clear anodised	60-531
			Black anodised	60-531-6

### Assembly Material

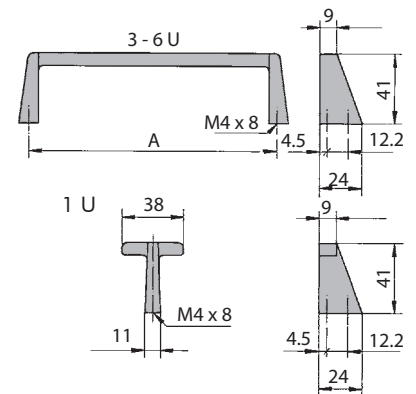
Description	Part-No.
Cross recessed cylinderhead earthing screw M4 x 10	61-260
Torx cylinderhead earthing screw M4 x 10, size T20	5443-01
Cross recessed countersunk screw M4 x 10	5342-10
Torx countersunk screw M4 x 10, size T20	5470-26

## 4.1.3 Die Cast Aluminium Handles



### 4.1.3 Die Cast Aluminium Handles

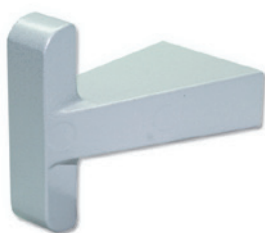
- Universal handle
- Wet painted white aluminium (RAL 9006)
- Material 1 U version: Die cast zinc
- **Scope of delivery:**
  - 1 die cast handle
- Per handle 2 screws are needed see below



For Case Height	A		Part-No.
	mm	inch	
1 U	-	-	60-541
3 U	88.9	3.50	60-553
4 U	133.4	5.25	60-554
6 U	222.3	8.75	60-556

### Assembly Material

Description	Part-No.
Cross recessed cylinderhead earthing screw M4 x 10	61-260
Torx cylinderhead earthing screw M4 x 10, size T20	5443-01
Cross recessed countersunk screw M4 x 10	5342-10
Torx countersunk screw M4 x 10, size T20	5470-26

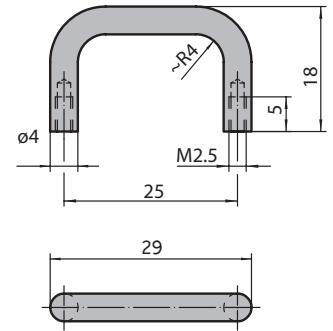


# 4: Handles / Feet

## 4.1.4 Small Component U-Handle, Steel

### 4.1.4 Small Component U-Handle, Steel

- For small components
- Steel powder coated black (RAL 9005)
- **Scope of delivery:**
  - 1 handle
- Per handle 2 screws are needed, see below



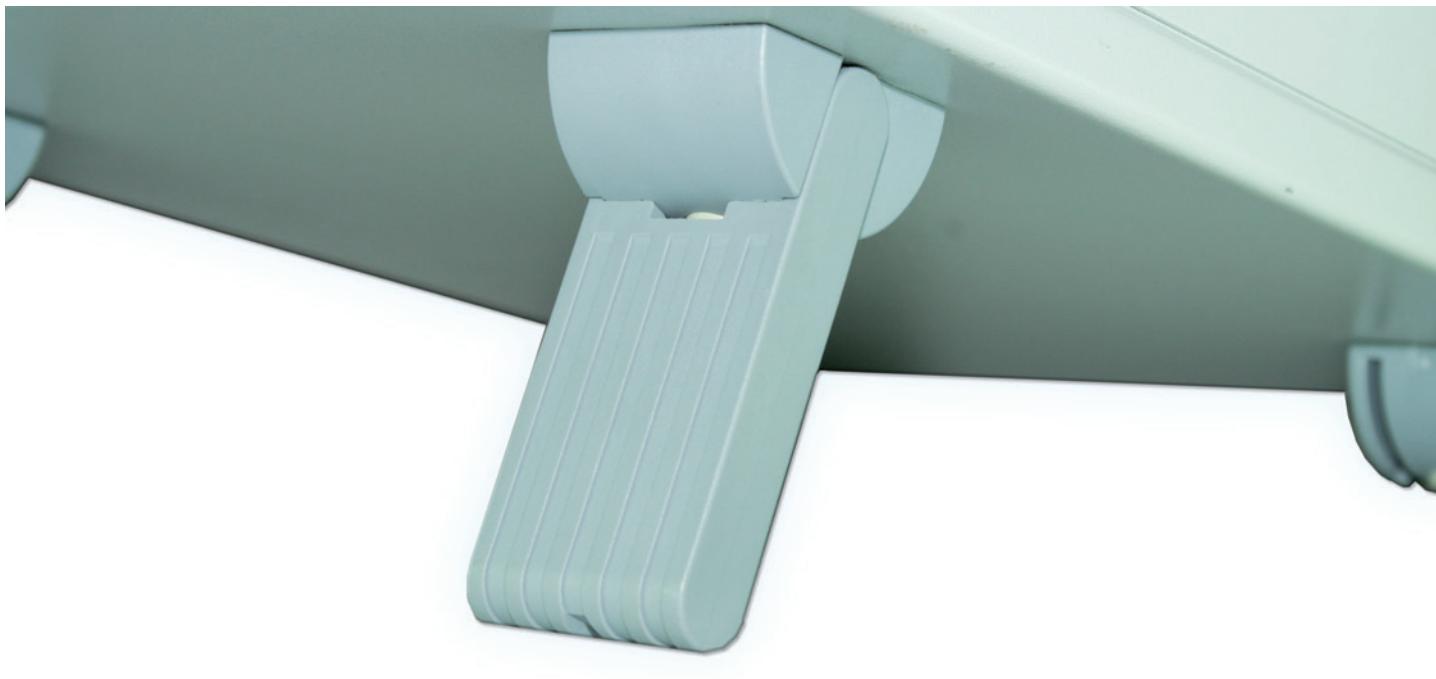
Description	Part-No.
U-handle steel, black	60-539

### Assembly Material

Description	Part-No.
Cross recessed cylinderhead screw M2.5 x 6	5325-06
Torx cylinderhead screw M2.5 x 6	5470-04
Cross recessed countersunk screw M2.5 x 6	5322-06
Torx countersunk screw M2.5 x 6, size T8	5470-20



# 4: Handles / Feet



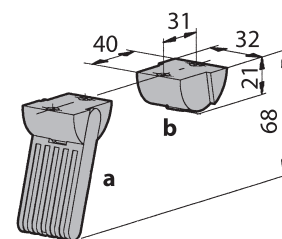
## 4.2 Feet

### 4.2.1 Case Feet Type 15



#### 4.2.1 Case Feet Type 15

- With and without tilt feet
- Glass-fiber reinforced plastic, UL94 V-0
- Including screws 3.5 x 8
- Up to 30 kg carrying capacity per set
- **Scope of delivery:**
  - 2 + 2 case feet, incl. rubber inserts NBR
  - 8 countersunk PT-screws 3.5 x 8

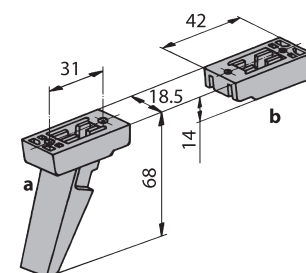


Description	Colour	Screw	Part-No.
Case feet 2 x <b>a</b> + 2 x <b>b</b>	Light grey (RAL 7035)	Cross recessed	63-524
		Torx	63K524
Case feet 2 x <b>a</b> + 2 x <b>b</b>	Black (RAL 9005)	Cross recessed	63-526
		Torx	63K526
Case feet 2 x <b>a</b> + 2 x <b>b</b>	Dark grey (special)	Cross recessed	63-525
		Torx	63K525

### 4.2.2 Case Feet Type 14



- With or without tilt feet
- Glass-fiber reinforced plastic, UL94 V-0
- Including screws 3.5 x 7
- Up to 30 kg carrying capacity per set
- **Scope of delivery:**
  - 4 case feet
  - 8 cross recessed countersunk PT-screws 3.5 x 7
  - 4 rubber inserts NBR



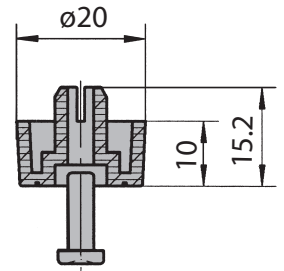
Description	Colour	Part-No.
Case feet 4 x <b>b</b>	Light grey (RAL 7035)	63-019
Case feet 4 x <b>b</b>	Black (RAL 9005)	63-321
Case feet 2 x <b>a</b> + 2 x <b>b</b>	Light grey (RAL 7035)	63-018
Case feet 2 x <b>a</b> + 2 x <b>b</b>	Black (RAL 9005)	63-320

# 4: Handles / Feet

## 4.2.3 Push in Feet



- Plastic, UL94 V-0
- Easy and fast mounting without tools
- Drilling:  $\varnothing 8 \pm 0.1$  mm
- Sheet metal: 1 to 2.5 mm
- Set of 4 pieces plastic feet
- Incl. push rivet



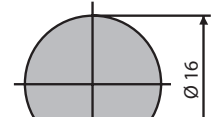
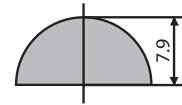
Description	Part-No.
Set of case feet light grey (RAL 7035)	63-529
Set of case feet black (RAL 9005)	63-528

## 4.2.4 Bumpon (Self adhesive Feet)



### 5.2.6 Bumpon (Self adhesive Feet)

- Self adhesive bumpon
- Black polyurethane, UL94 HB
- **Scope of delivery:**
  - 1 bumpon



Description	Part-No.
1 plastic bumpon	7650-52

