

ELMA
Your Solution Partner



reddot award 2014
winner

iD-Box 16

INDIVIDUAL DESIGN HOUSING FOR HIGH-QUALITY ELECTRONICS

SYSTEM SOLUTIONS
ENCLOSURES & COMPONENTS
ROTARY SWITCHES

STANDARD-INDEPENDENT ENCLOSURE PLATFORM

THE ULTIMATE INDIVIDUAL EXPERIENCE

The iD-Box 16 is a versatile housing for high-quality electronic components. The novelty consists of a standard-independent system that not only addresses the individual needs of the end user but also adapts its size to reflect the application and its needs.

NO SPACE WASTED

The housing adapts to your electronics dimensions.

A CLEVER CONSTRUCTION

The additional internal housing has been completely eliminated thanks to a simple sheet-metal bracket. This makes the product even more modular in terms of its manufacture. The aluminum frame does not just act as a handle; in addition to integrating the bolt joint, it also offers stability and flows around the housing in an extremely elegant way.

READABILITY OF THE HMI-INTERFACE

With an ergonomic approach the iD-Box 16 allows the end-user to use the front panel elements either in a sitting or standing position comfortably thanks to the sloping front. It also provides design freedom, very much in line with the modular principle.

HIGH DESIGN AESTHETICS

With fewer screws and its flowing forms, the housing has a minimalist and clean look. Materials such as anodized aluminum give the housing a premium appeal and appearance. The housing's properties are just as unique as its customers.

HANDLING AND ASSEMBLY

The set up of this product is a piece of cake and the assembly is as fast as never before! In addition, Elma offers fully integrated system solutions.



RED DOT DESIGN AWARD

The international design competition recognizes outstanding design in the areas of product design, communication design and design concepts. The «red dot» is an internationally recognized quality label for excellent design.

In the year 2014, 1816 manufacturers, designers and architects from 53 countries have submitted their latest products and projects. The jury consists of 40 experts and award the best works from over 4800 designs.



STANDARD-INDEPENDENT ENCLOSURE PLATFORM

THE ULTIMATE INDIVIDUAL EXPERIENCE

Size (mm)**You define the dimensions:**

- › Height
- › Width
- › Depth

Colors**You define the color combination for:**

- › Base plate
- › Cover
- › Frame
- › Rear panel
- › Front panel

Design & Interface**You define which parts are printed and what features you want to incorporate into your front.**

- › Displays
- › Switches
- › Touch-function
- › LED's
- › Printing: Labeling, logo, photorealistic prints

EMC**You define the right protection of your enclosure. We offer different levels of EMC protection.**

- › **Increased EMC level:** Contact points ensure adequate shielding.
- › **Basic EMC level:** Electrically-bonded enclosure parts, without additional gaskets.

Cooling**You define if cooling is needed**

- › Thermal analysis service: To reduce your development process.
- › Convection cooled: We have a comprehensive range of built-in fan solutions.

Interior**You define what electronics to be installed:**

- › Mounting possibilities: Nuts, bolts, etc.
- › Power supplies
- › Cabling

ENCLOSURES WILL LOOK EXACTLY HOW YOU WANT THEM TO LOOK LIKE

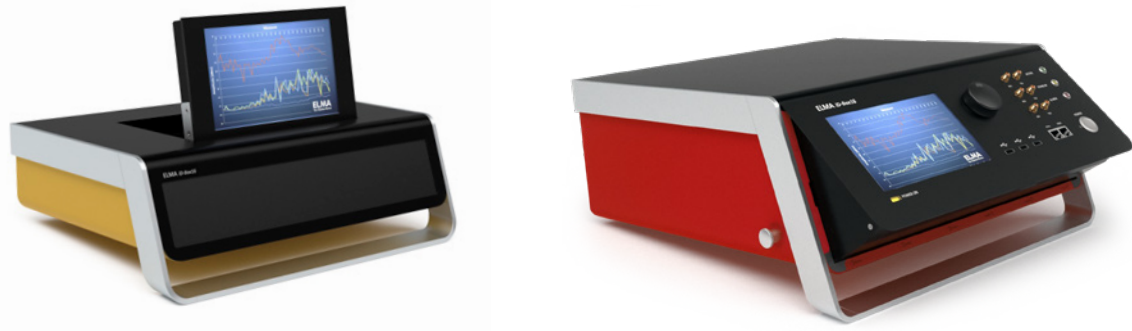
SIZE



COLOURS



FUNCTIONS



SUPPORT DURING THE ENTIRE PROCESS

APPLICATION EXPERIENCE AND KNOW-HOW SINCE 1960

We offer:

- › Design and feasibility studies
- › Thermal analysis
- › 2D and 3D data
- › Prototyping
- › Series production
- › Electronic integration
- › Testing
- › Logistics and packaging

YOUR SOLUTION PARTNER

Elma Electronic AG develops and produces high-performance electronics and suitable enclosures from single components to entire systems for industry, railway technology and medical equipment. With over 100 employees in Switzerland alone, we offer innovative, high-quality products, customer-specific solutions and engineering services.

Our key strengths include a high level of development competence and an extensive electronics portfolio. From rotary switches and other electromechanical components to backplanes, computer and storage solutions, power supply units and electronic packaging, all the way to fully integrated systems. On this basis, we are in a position to develop new and trendsetting solutions quickly and safely – in top quality and convincing design, as prototypes or ready for series production.

We are listed on the Swiss Stock Exchange and represented around the world: The Elma Group – Elma Europe, Elma America and Elma Asia – includes subsidiaries in ten countries and a global sales network. In the customer's interest, we co-operate with leading technology providers in the sector and are ourselves regularly approached for advice. Everything from a single source, proven standards, outstanding solutions: Choose Elma Electronic AG.





**Elma Electronic AG,
Switzerland**

Hofstrasse 93
CH-8620 Wetzikon
T: +41 44 933 41 11
F: +41 44 933 42 15
sales@elma.ch

**Elma Electronic GmbH,
Germany**

Stuttgarter Strasse 11
D-75179 Pforzheim
T: +49 7231 97 34 0
F: +49 7231 97 34 97
info@elma.de

Elma Electronic France SA

16 rue de Hannah Arendt
Parc des Forges
F-67200 Strasbourg
T: +33 38 56 72 50
sales@elma-electronic.fr

Elma Electronic UK Ltd.

Solutions House
Priory Business Park
Fraser Road
Bedford MK44 3BF
Great Britain
T: +44 1234 838822
F: +44 1234 836650
sales@elma.co.uk

Elma Electronic Romania SRL

Chisoda, DN 59 km8 + 550m
RO-307221 Judetul Timis
T: +40 374 480 400
F: +40 256 249 820
sales@elma.ch

Elma Electronic Israel Ltd.

34, Modi'in St., I.Z.Sgula
IL-49271 Petach-Tikva
T: +972 3 930 50 25
F: +972 3 931 31 34
sales@elma.co.il

Elma Electronic Inc., USA

44350 S. Grimmer Blvd
Fremont, CA 94538, USA
T: +1 510 656 3400
F: +1 510 656 3783
sales@elma.com

Optima Stantron, USA

1775 MacLeod Drive
Lawrenceville, GA 30043, USA
T: +1 770 496 4000
F: +1 770 496 4026
sales@elma.com

**Elma Electronic Private Ltd.,
India**

Green Arch
3rd Phase 1st Main
J.P. Nagar
Bangalore 560078
sales@elma.com

**Elma Electronic Technology
(Shanghai) CO., Ltd.,
China**

No. 11 Building, No198
Chang Jian Road,
Bao Shan District
CN-200949 Shanghai
T: +86 21 5866 5908
F: +86 21 5866 5918
sales@elmachina.com

**Elma Asia Pacific Pte. Ltd.,
Singapore**

8 Ubi Road 2
07-14 Zervex Building
SG-408538 Singapore
T: +65 6479 8552
F: +65 6479 8662
sales.elmaap@elma.com

Your local solution partner