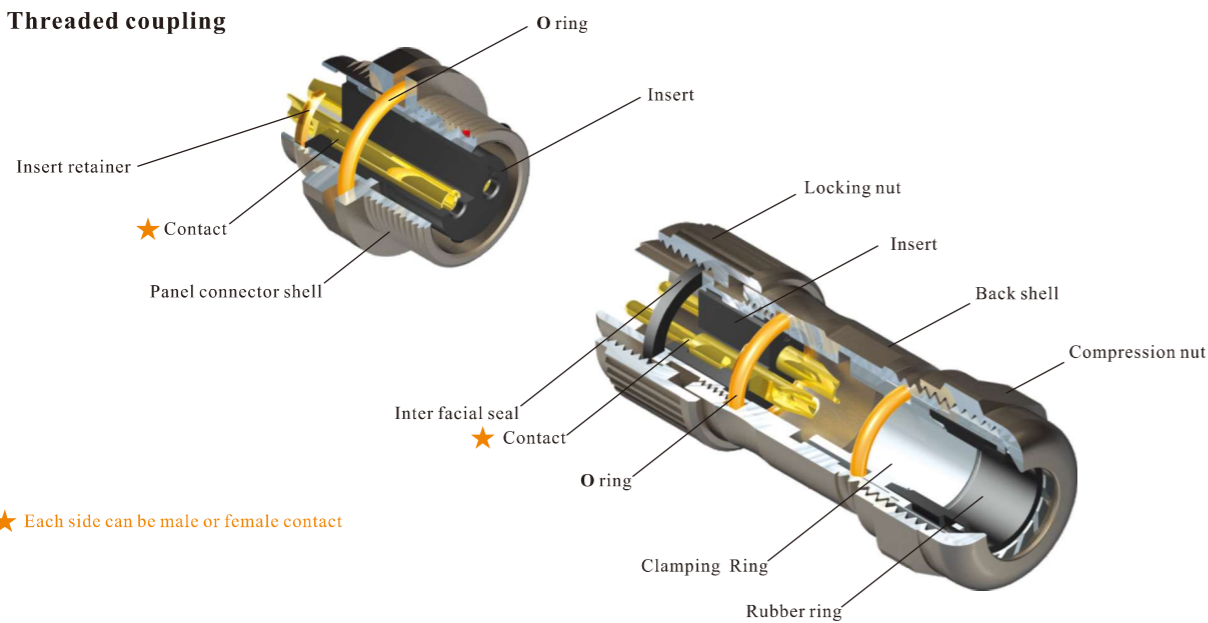




● ST12 Series IP67

● Threaded coupling



★ Each side can be male or female contact

Material and spec

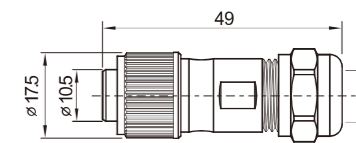
Coupling	Threaded coupling
Shell material	Zinc alloy with black nickel plating
Insert material	PPS, max temperature 260 °C
Contact material	Brass with gold plating
Termination	Solder
Cable outer diameter range	5-8mm
IP rating	IP67
Mating cycle	500
Temperature range	-40°C~+85°C
Insulation resistance	2000MΩ

ST12 Series



ST1210 / P— Male contact
ST1210 / S— Female contact

Cable connector
Mate with ST1211, ST1212, ST1213, ST1214

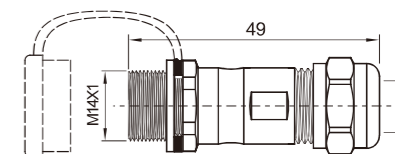


Cable outer diameter range: 5-8mm



ST1211 / P— Male contact
ST1211 / S— Female contact

In-line cable connector
Mate with ST1210

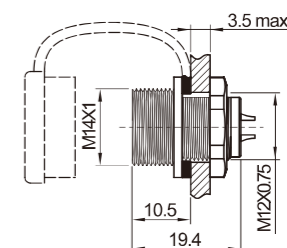
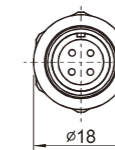


Cable outer diameter range: 5-8mm

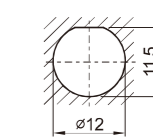


ST1212 / P— Male contact
ST1212 / S— Female contact

Rear-nut mount
Mate with ST1210

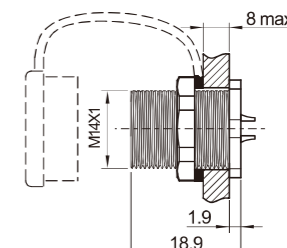
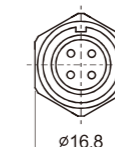


Panel cutout

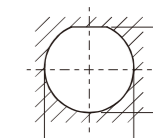


ST1213 / P— Male contact
ST1213 / S— Female contact

Front-nut mount
Mate with ST1210

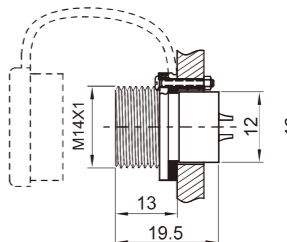
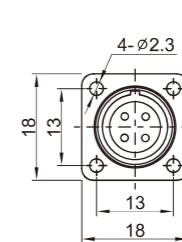


Panel cutout

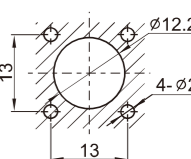


ST1214 / P— Male contact
ST1214 / S— Female contact

Square flange
Mate with ST1210



Panel cutout



Solder contact spec

Number of contact	2	3	4	5	6	7	9
Male contact face view							
Rated current (A)	13	13	5	5	5	5	3
Contact diameter (mm)	Ø1.6X2	Ø1.6X3	Ø1X4	Ø1X5	Ø1X6	Ø1X7	Ø0.7X9
Rated voltage (AC.V)	250	250	200	180	125	125	125
Test voltage(AC.V) 1 min	1500	1500	1500	1000	1000	1000	1000
Contact resistance (mΩ)	2.5	2.5	5	5	5	5	10
Wire size (mm ² / AWG)	≤2/14	≤2/14	≤0.75/18	≤0.75/18	≤0.75/18	≤0.75/18	≤0.5/20