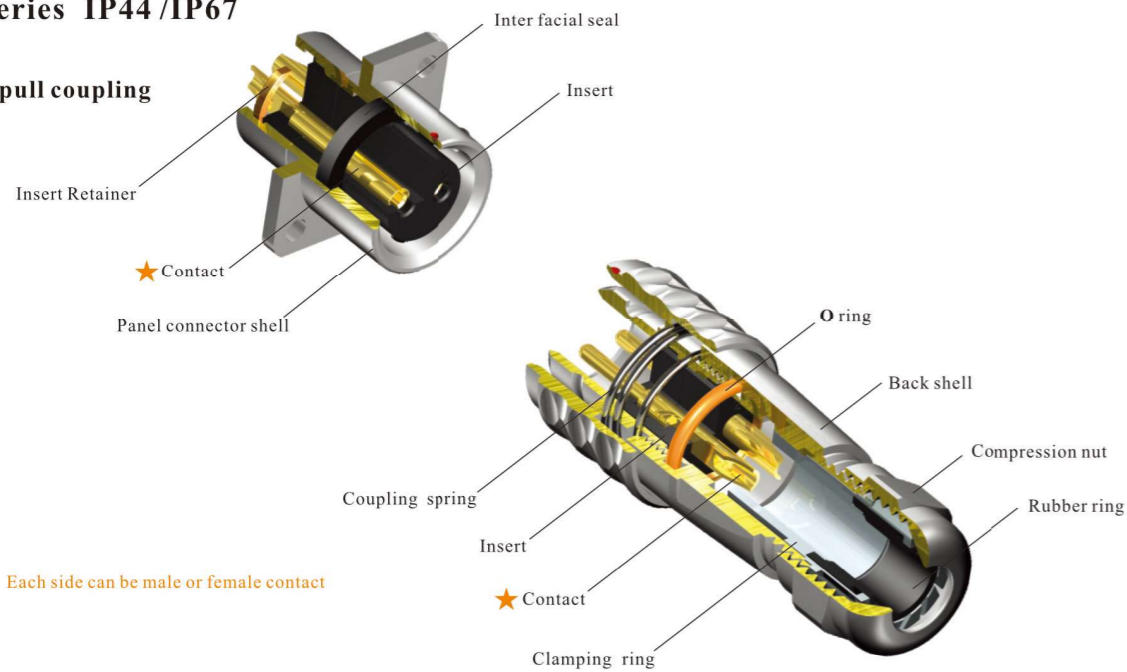


IP67



● SF Series IP44 /IP67

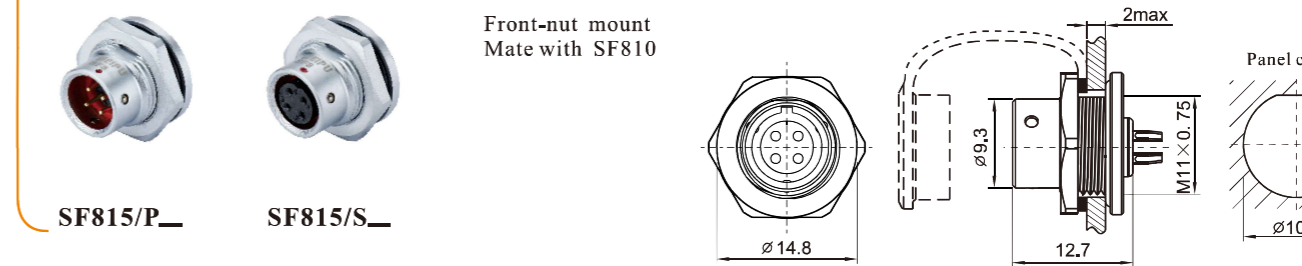
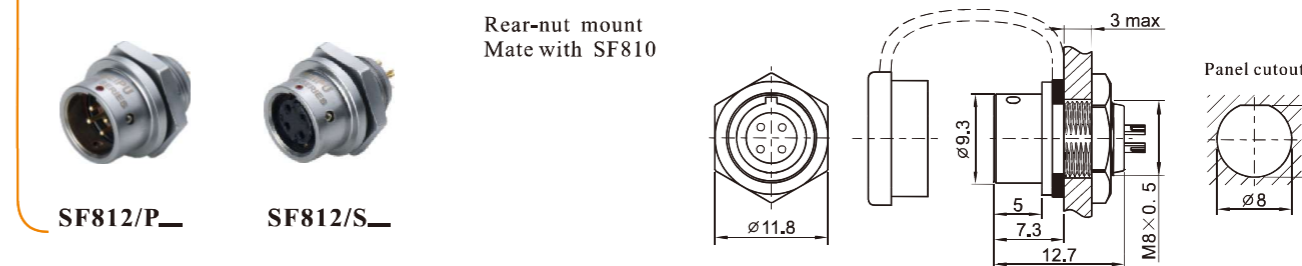
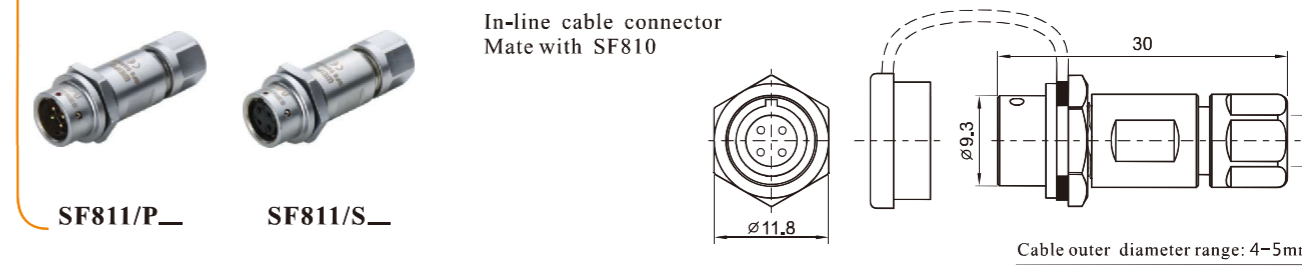
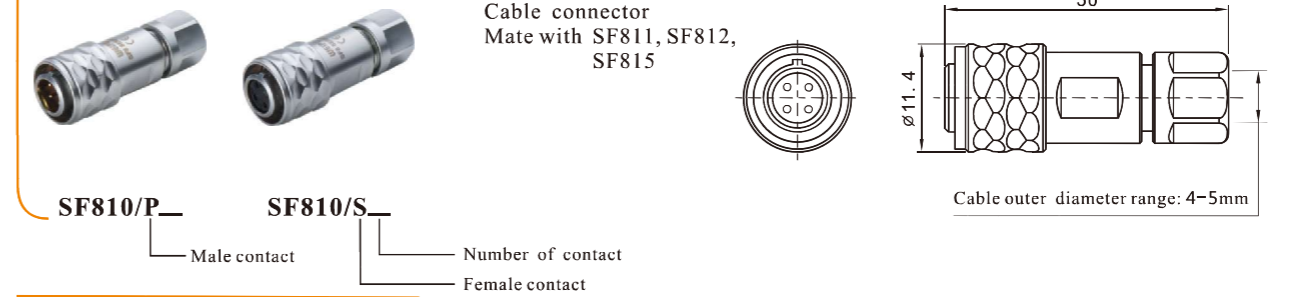
● Push-pull coupling



Material and spec

Coupling	Push-pull
Shell material	Brass with chrome plating
Insert material	PPS max temperature 260 °C
Contact material	Brass with gold plating
Termination	Solder: SF6, SF8, SF10, SF12, SF16, SF20 Crimp: SF16, SF20 Screw: SF20 (Ø2.5mm contact)
Cable outer diameter range	SF6: 3-4mm SF8: 4-5mm SF10: 4-6.5mm SF12: I: 4-6.5mm, II: 5-8mm SF16 I: 5-8mm, II: 8-12mm SF20 I: 8-12mm
IP rating	SF6, SF8: IP44 / IP67 SF6B, SF8B, SF10, SF12, SF16, SF20: IP67
Mating cycle	500
Temperature range	-40 °C ~ +85 °C
Insulation resistance	2000MΩ

SF8 Series IP44



Solder contact spec

Number of contact	2	3	4	6	8
Male contact face view					
Rated current (A)	5	5	3	3	3
Contact diameter(mm)	Ø1×2	Ø1×3	Ø0.6×4	Ø0.6×6	Ø0.6×8
Rated voltage (AC.V)	125	125	30	30	30
Test voltage(AC.V) 1 min	1000	1000	500	500	500
Contact resistance(mΩ)	5	5	10	10	10
Wire size(mm ² /AWG)	≤0.75/18	≤0.75/18	≤0.5/20	≤0.5/20	≤0.5/20

SF8B Series IP67

SF
8



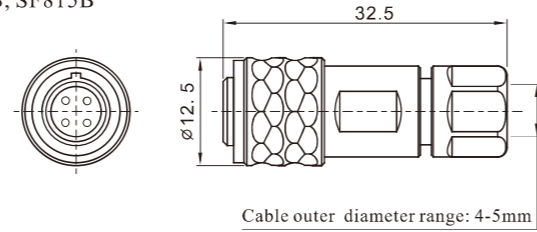
Cable connector
Mate with SF811B, SF812B, SF815B

SF810B/P_

SF810B/S_

Male contact

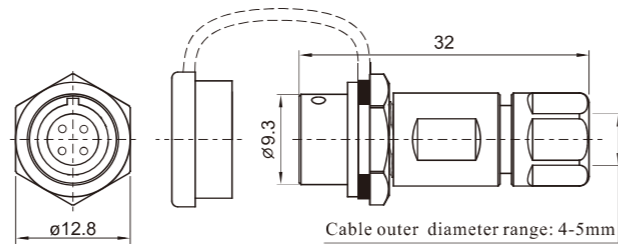
Number of contact
Female contact



In-line cable connector
Mate with SF810B

SF811B/P_

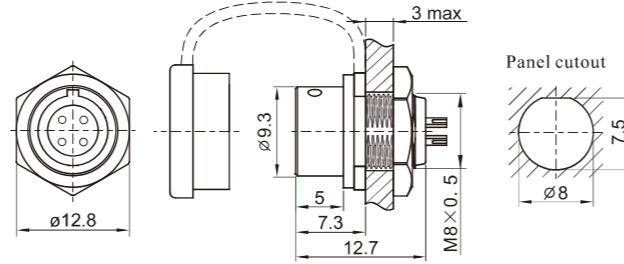
SF811B/S_



Rear-nut mount
Mate with SF810B

SF812B/P_

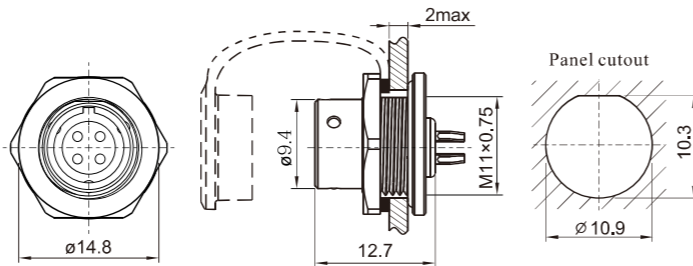
SF812B/S_



Front-nut mount
Mate with SF810B

SF815B/P_

SF815B/S_



Solder contact spec

Number of contact	2	3	4	6	8
Male contact face view					
Rated current (A)	5	5	3	3	3
Contact diameter(mm)	1×2	1×3	0.6×4	0.6×6	0.6×8
Rated voltage (AC.V)	125	125	30	30	30
Test voltage(AC.V) 1 min	1000	1000	500	500	500
Contact resistance(mΩ)	5	5	10	10	10
Wire size(mm ² /AWG)	≤0.75/18	≤0.75/18	≤0.5/20	≤0.5/20	≤0.5/20