

SA12 Series

SA
12

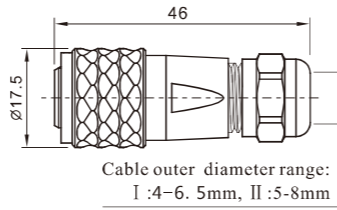
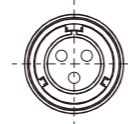


Cable connector
Mate with SA1211, SA1212, SA1213, SA1215

SA1210/P SA1210/S

Male contact
Female contact

Colour:
B: Black
S: Silver
L: Blue (special order)
G: Green (special order)
R: Red (special order)
Cable outer diameter
I : 4-6.5mm, II : 5-8mm

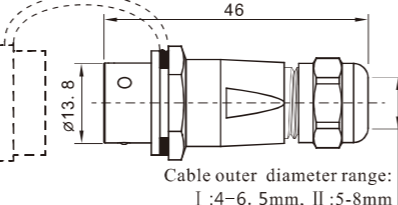
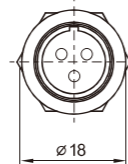


Cable outer diameter range:
I : 4-6.5mm, II : 5-8mm



In-line cable connector
Mate with SA1210

SA1211/P SA1211/S



Cable outer diameter range:
I : 4-6.5mm, II : 5-8mm

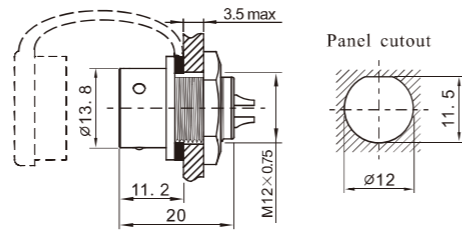
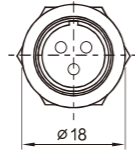


Rear-nut mount
Mate with SA1210

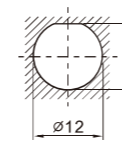
SA1212/P SA1212/S

Number of contact

Colour:
B: Black
S: Silver
L: Blue (special order)
G: Green (special order)
R: Red (special order)

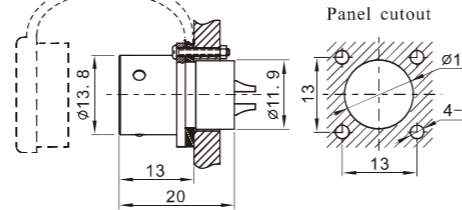
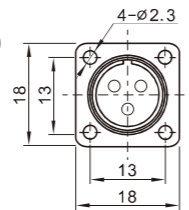


Panel cutout

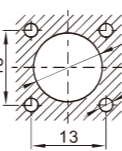


Square flange
Mate with SA1210

SA1213/P SA1213/S

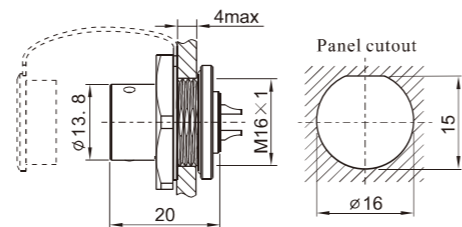
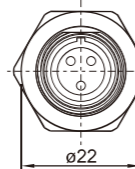


Panel cutout

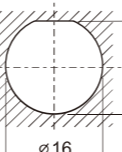


Front-nut mount
Mate with SA1210

SA1215/P SA1215/S



Panel cutout



Solder contact spec

Number of contact	2	3	4	5	6	7	9
Male contact face view							
Rated current (A)	13	13	5	5	5	5	3
Contact diameter	ø1.6X2	ø1.6X3	ø1X4	ø1X5	ø1X6	ø1X7	ø0.7X9
Rated voltage (AC.V)	250	250	200	180	125	125	125
Test voltage(AC.V) 1 min	1500	1500	1500	1000	1000	1000	1000
Contact resistance (mΩ)	2.5	2.5	5	5	5	5	10
Wire size (mm ² /AWG)	≤2/14	≤2/14	≤0.75/18	≤0.75/18	≤0.75/18	≤0.75/18	≤0.5/20



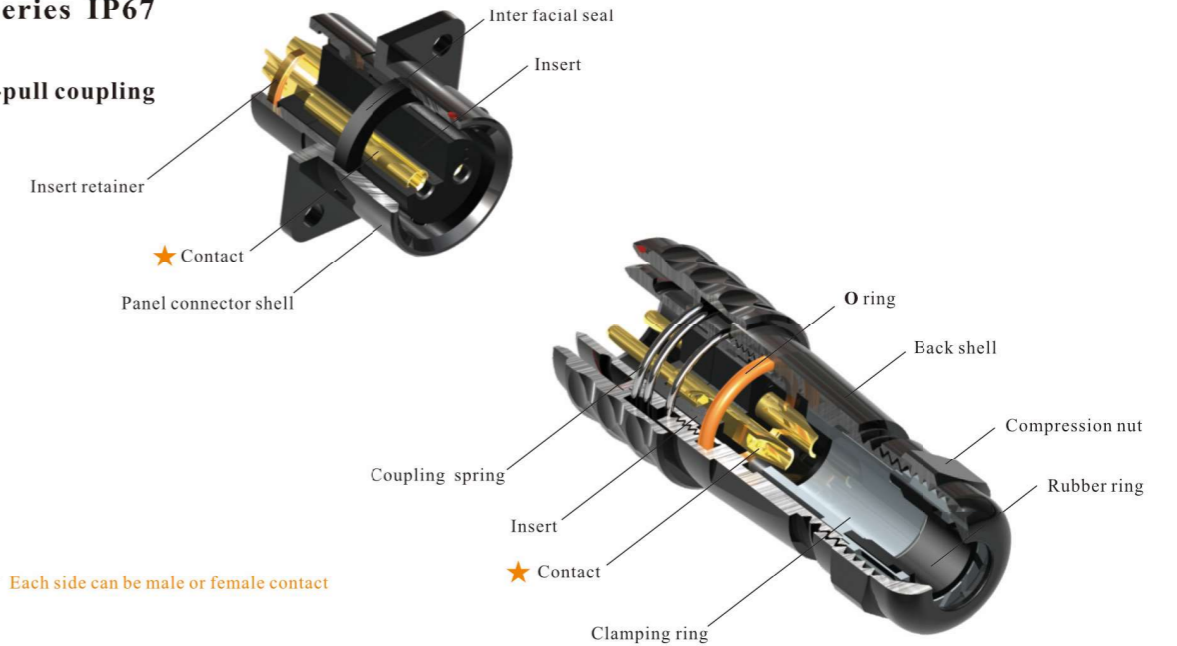
WEIPU Connector

IP67

SA
Series

SA Series IP67

Push-pull coupling



★ Each side can be male or female contact

Material and spec

Coupling	Push-pull
Shell material	Anodized aluminium
Insert material	PPS, max temperature 260 °C
Contact material	Brass with gold plating
Termination	Solder: SA6, SA8, SA10, SA12, SA16, SA20, SA28 Crimp: SA16, SA20, SA28 Screw: SA20, SA28
Cable outer diameter range	SA6: 3.5-4mm SA8: 4-5mm SA10: 4-6.5mm SA12: I: 4-6.5mm, II: 5-8mm SA16: I: 5-8mm, II: 8-12mm SA20: 8-12mm SA28: 13-16mm
IP rating	IP67
Mating cycle	500
Temperature range	-40°C ~ +85°C
Insulation resistance	2000 MΩ