

TZ Series

Piezo switches (Pulse)



SPECIFICATIONS

RATING : 5-24VADC/1A PULSE MODE.

OPERATING LIFE : 50 MILLION CYCLE MIN.

CONTACT RESISTANCE : 1Ω MAX.

OPERATING TEMPERATURE: -20°C to 65°C.

MATERIALS

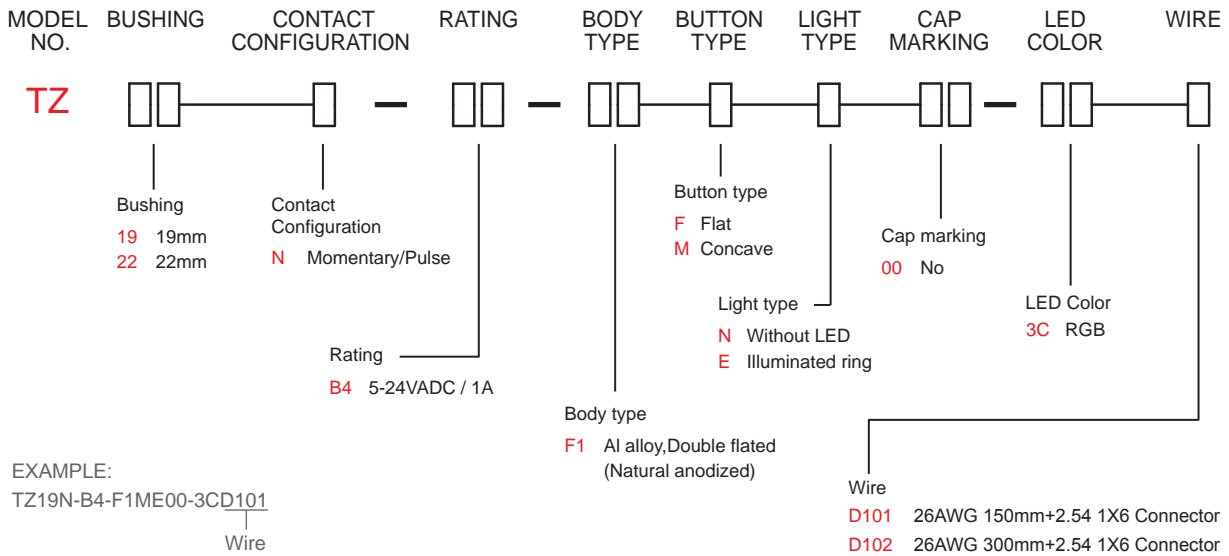
BUSHING: Aluminum alloy.

SEALING : Silicone,EPOXY.

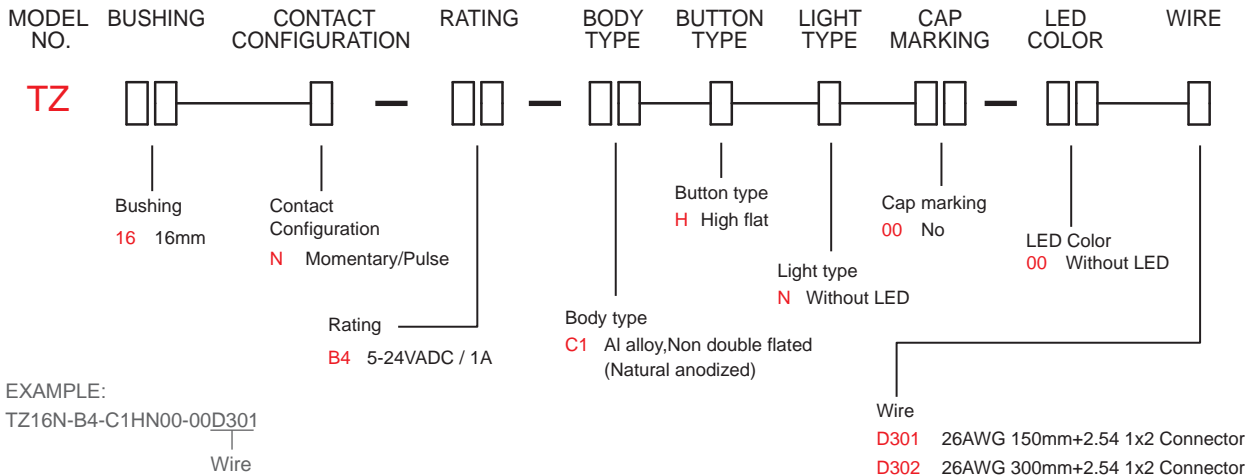
HEX NUT : Nickel plated brass.



HOW TO ORDER



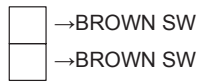
TZ16 HOW TO ORDER



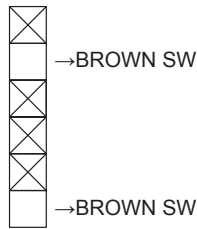
CIRCUIT

00 Without led application diagram

Available with 16mm Bushing only

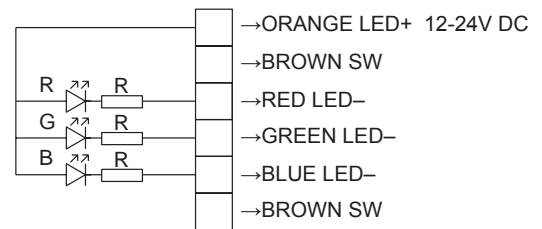


Available with 19mm/22mm Bushing only



3C Color led application diagram

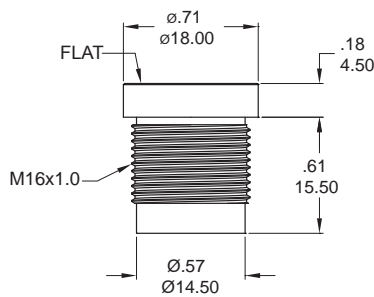
Available with 19mm/22mm Bushing only



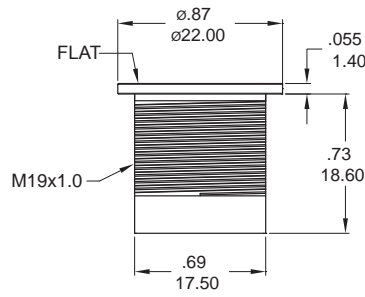
BUSHING

F Flat button type

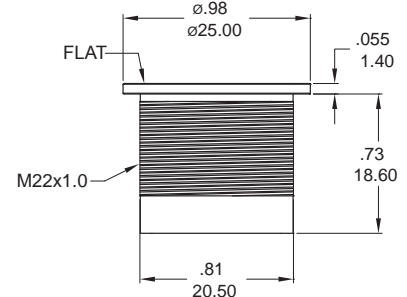
16mm Bushing



19mm Bushing

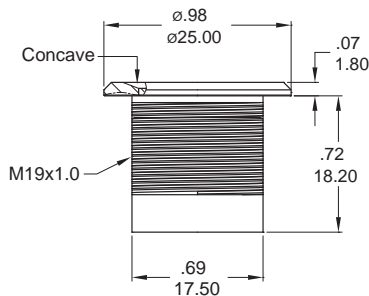


22mm Bushing

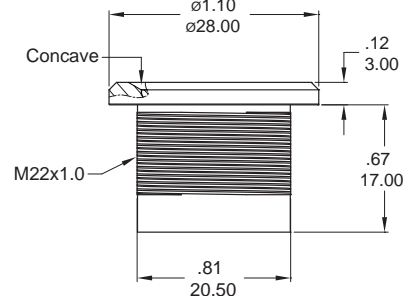


M Concave button type

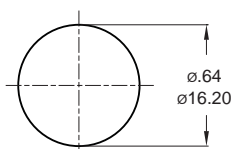
19mm Bushing



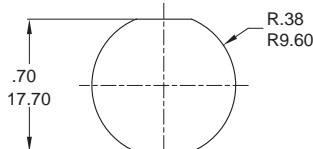
22mm Bushing



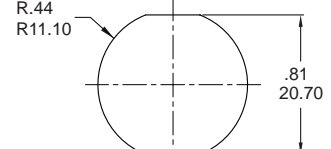
PANEL CUTOUT



Available with 16mm Bushing only
Max. Panel thickness: 8.0mm [315] (Max.)



Available with 19mm Bushing only
Max. Panel thickness: 10.0mm [394]



Available with 22mm Bushing only
Max. Panel thickness: 10.0mm [394]



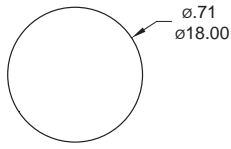
TZ
Piezo switches

TZ Series

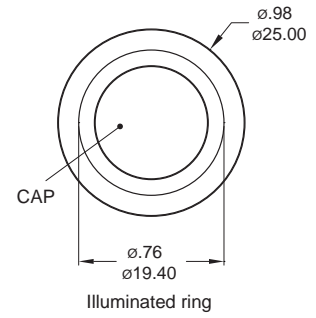
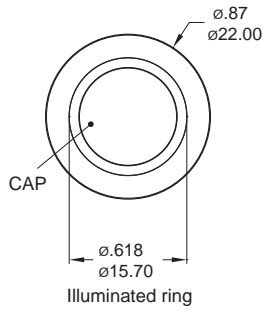
Piezo switches (Pulse)

LIGHT TYPE

F Flat button type (Without led)

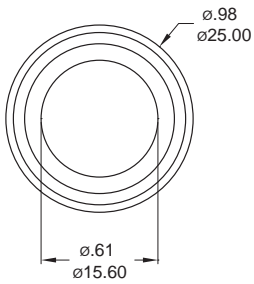


F Flat button type (Illuminated ring)

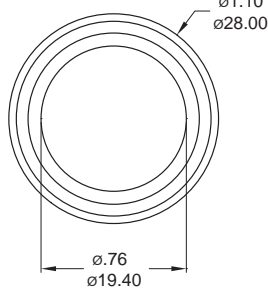


M Concave button type (Without led)

19mm Bushing

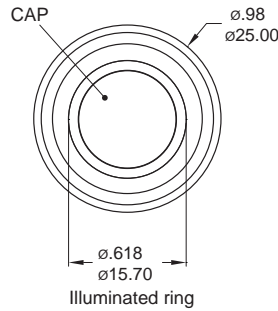


22mm Bushing

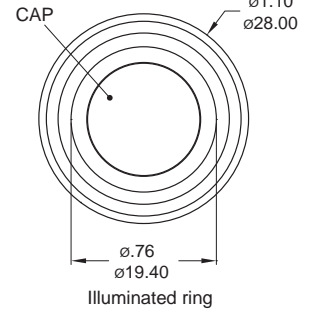


M Concave button type (Illuminated ring)

19mm Bushing



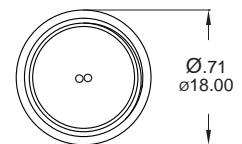
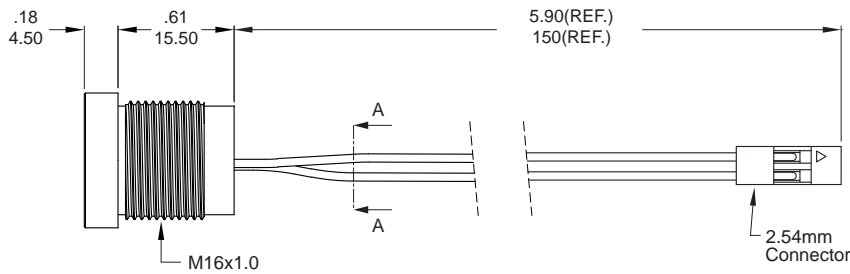
22mm Bushing



TZ
Piezo switches

WIRE

F Flat, Without led

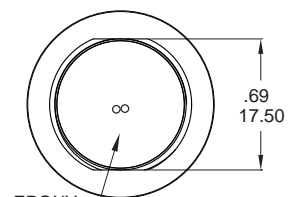
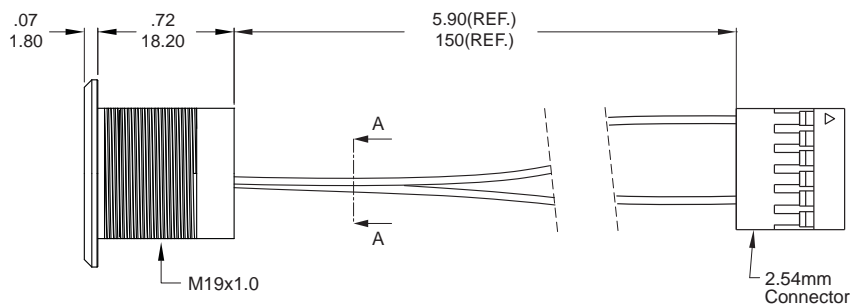


Wire: Brown

Part No. Shown : TZ16N-B4-C1HN00-00D301

SECTION A-A

M Concave, Without led



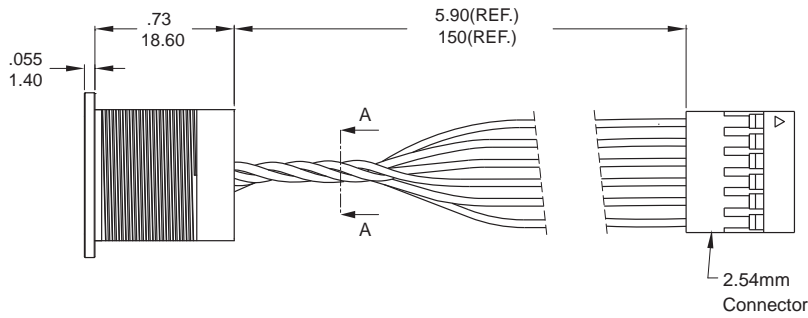
Wire: Brown

Part No. Shown : TZ19N-B4-F1MN00-00D101

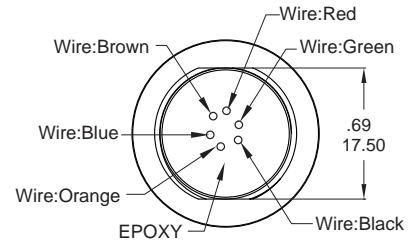
SECTION A-A

WIRE

F Flat,Illuminated ring

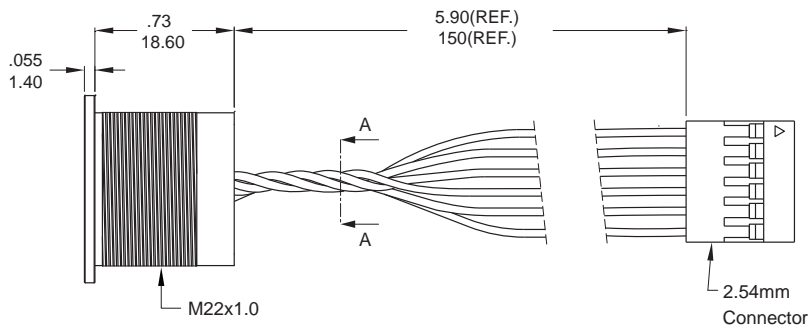


Part No. Shown : TZ19N-B4-F1FE00-3CD101

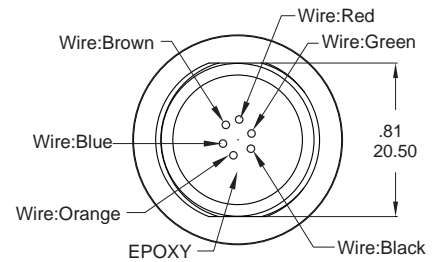


SECTION A-A

F Flat,Illuminated ring

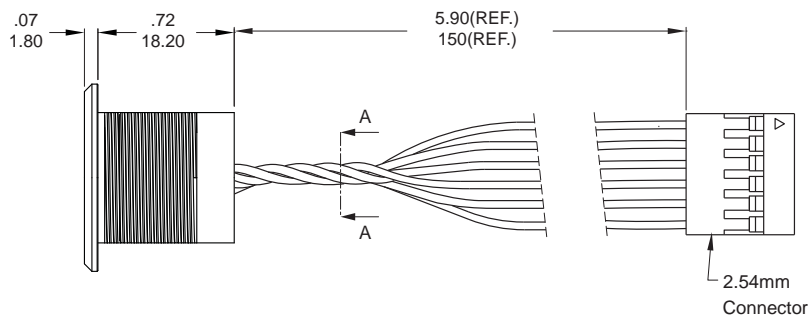


Part No. Shown : TZ22N-B4-F1FE00-3CD101

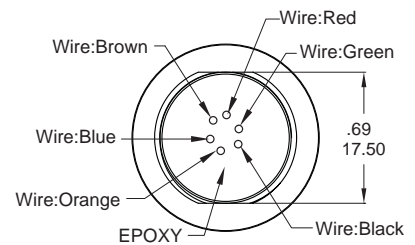


SECTION A-A

M Concave,Illuminated ring

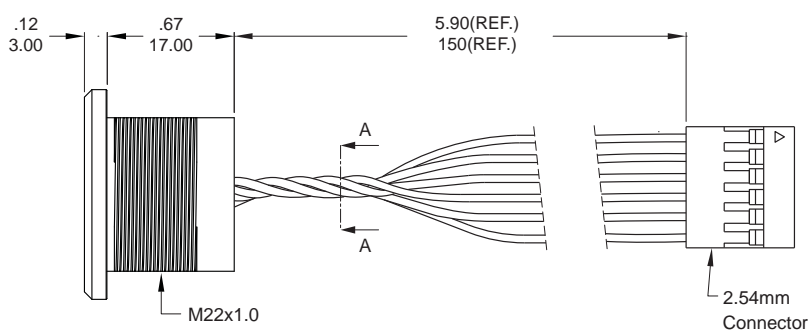


Part No. Shown : TZ19N-B4-F1ME00-3CD101

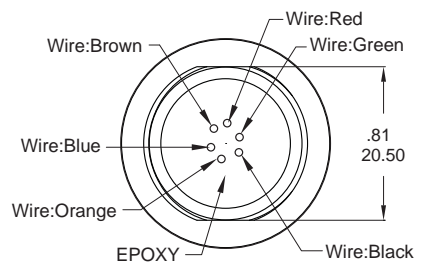


SECTION A-A

M Concave,Illuminated ring



Part No. Shown : TZ22N-B4-F1ME00-3CD101



SECTION A-A

