

**SPECIFICATIONS**

**MECHANICAL**

Mechanical Life:10,000 operation cycles.  
 Operation Force:350gf.  
 Operation Temperature Range:-20° C to +70° C  
 Storage Temperature Range:-40° C to +85° C.  
 Vibration Test:MIL-STD-202F METHOD 201A.  
     Frequency:10-55-10Hz /1minute.  
     Directions:X,Y,Z, three mutually  
     Perpendicular directions.  
     Time:2 hours each direction.  
     High reliability.  
 Shock Test: MIL-STD-202F METHOD 213B.  
     CONDITION A.  
     Gravity:50G(peak value). 11msec.  
     Direction and times: 6 sides and 3 times  
     in each direction.

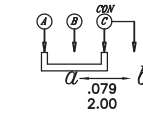
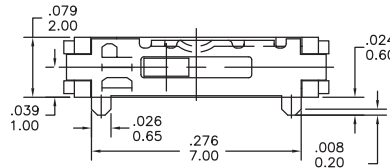
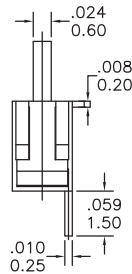
**ELECTRICAL**

Electrical Life:10,000 operations min.  
 Non-Switching Rating:100mA, 50VDC.  
 Switching Rating:25mA, 24VDC.  
 Contact resistance:100mΩ max.  
 Insulation Resistance:100mΩ min.(500VDC)  
 Dielectric Strength:500VAC / 1minute.  
 Capacitance:50pF max.  
 Circuit:1P2T, 1P3T

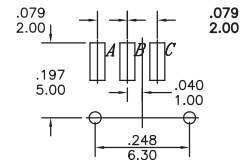
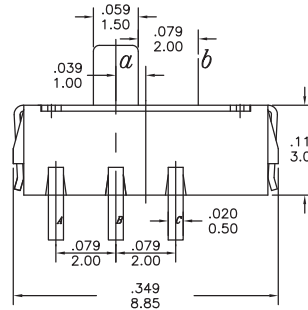
**MODEL OPTIONS**



**SS3-CM**



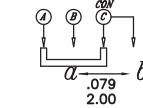
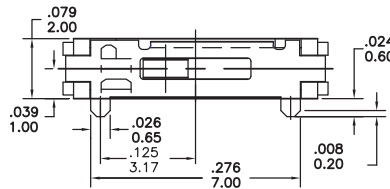
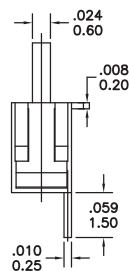
**CIRCUIT DIAGRAM**



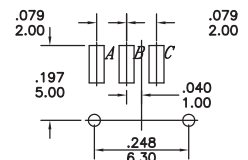
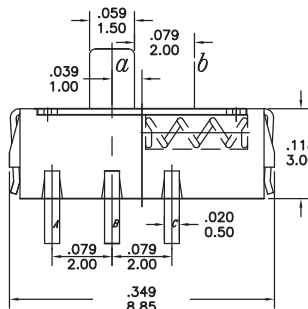
**PCB MOUNTING**



**SS3-CMS**

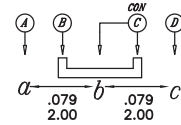
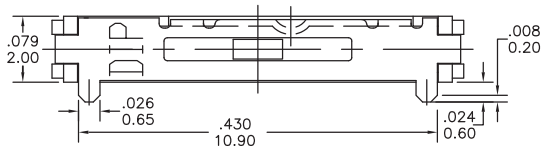
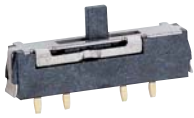


**CIRCUIT DIAGRAM**



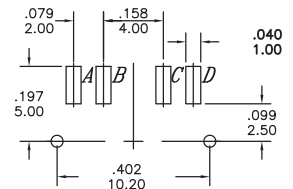
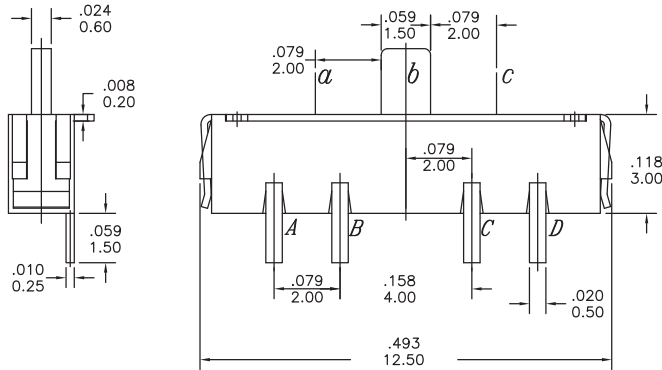
**PCB MOUNTING**

## MODEL OPTIONS

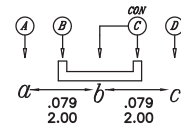
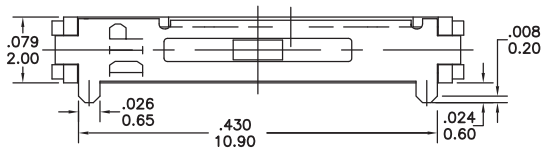


CITCUIT DIAGRAM

SS4-CM

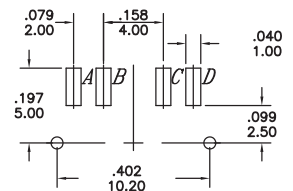
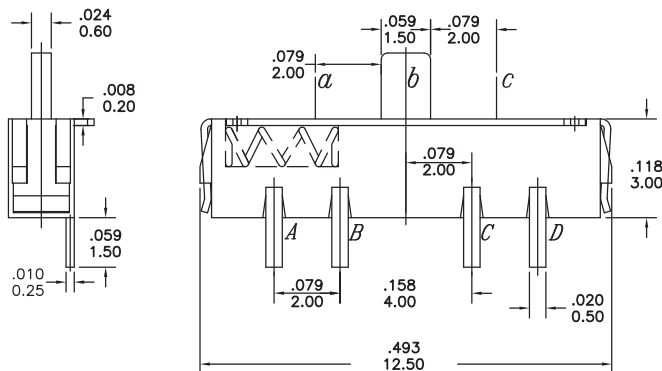


PCB MOUNTING



CITCUIT DIAGRAM

SS4-CMS



PCB MOUNTING