

LOCK SWITCH

RAIS IMPULSION LOCK SWITCH WITH A ROTARY SWITCH MODULE

ELECTRICAL & MECHANICAL SPECIFICATION

Switch Rating:	150mA @ 250V ac/dc 350mA @ 110V ac/ dc 1A @ 12V ac/dc	Life:	>10,000 Cycles
		Operating Temperature:	-30°C to +85°C
Proof Voltage:	1,000V ac (Initial)	Operating Torque (nominal):	7.2Nm
Insulation Resistance:	>999 MΩ at 500V dc (Initial)	End Stop Torque (nominal):	1.2Nm
Contact Resistance	<20 mΩ (Initial)	Lock Housing Material:	Zinc Alloy Bright Cr Plated
Contact/Terminal Material:	Brass CZ108 Ag Plated	Keys Material:	Mild Steel Ni Plated
		Wafer Material:	Polyphenylene Sulphide (PPS)

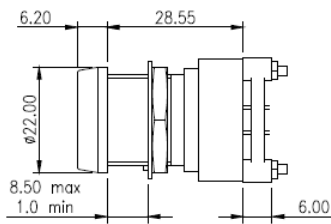
FEATURES

<p>Spring Return – double or single impulsion</p> <p>Single and multi- wafer</p> <p>Up to 5 poles per switch</p> <p>Solder or PCB terminals</p> <p>Silver contacts</p> <p>Gold flashed or gold plated also available</p>	<p>2 keys per switch as standard</p> <p>Common or differ keys</p> <p>Key removeable at 60°</p> <p>Master key system available</p> <p>Max panel thickness</p> <p>Lock type:</p> <p>Differs</p> <p>Max. wafers</p>	<p>Two stage assembly: lock inserted from the inside and the lock bezel screws on from the front to secure the assembly</p> <p>Non-shorting BBM (break before make) or Shorting MBB (make before break) contacts</p> <table border="1" style="width: 100%; border-collapse: collapse; text-align: center;"> <thead> <tr> <th>5RAL</th> <th>8RAL</th> <th>LIMITED ACCESS</th> </tr> </thead> <tbody> <tr> <td>8.5 mm</td> <td>11.0mm</td> <td>11.0mm</td> </tr> <tr> <td>5 disc impulsion</td> <td>8 disc impulsion</td> <td>8 disc impulsion</td> </tr> <tr> <td>200</td> <td>2000</td> <td>see inset below</td> </tr> <tr> <td>1</td> <td>1</td> <td>6</td> </tr> </tbody> </table>	5RAL	8RAL	LIMITED ACCESS	8.5 mm	11.0mm	11.0mm	5 disc impulsion	8 disc impulsion	8 disc impulsion	200	2000	see inset below	1	1	6
5RAL	8RAL	LIMITED ACCESS															
8.5 mm	11.0mm	11.0mm															
5 disc impulsion	8 disc impulsion	8 disc impulsion															
200	2000	see inset below															
1	1	6															

SINGLE WAFER RAL IMPULSION LOCKSWITCHES

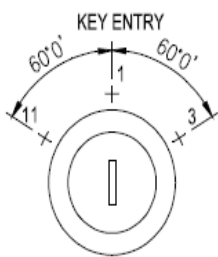
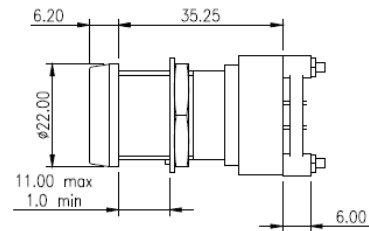
5RAL IMPULSION

5-RAL-004 DOUBLE IMPULSION 5-RAL-005 SINGLE IMPULSION



8RAL IMPULSION

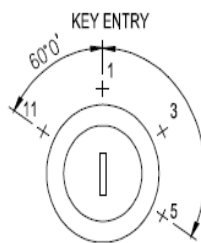
8-RAL-004 DOUBLE IMPULSION 8-RAL-005 SINGLE IMPULSION



DOUBLE IMPULSION 5-RAL-004 8RAL-004

INDEXING MOVEMENTS
60° C.W and 60° A.C.W 60° C.W only.
60° A.C.W .only

Key Free at 1 only

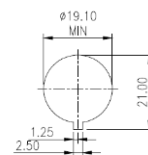


SINGLE IMPULSION 5-RAL-005 8RAL-005

INDEXING MOVEMENTS 60°
A.C.W (Impulsion) and 60° to 240° C.W (Non-Impulsion).

Key Free at 1,3 and 5

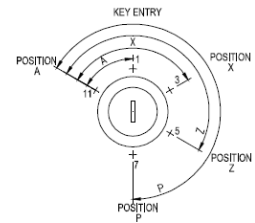
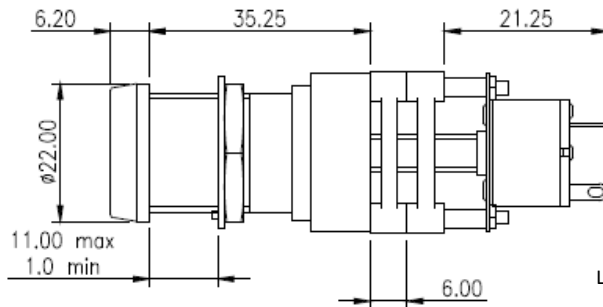
PANEL PIERCING



LOCK MOVEMENT REF.



LIMITED ACCESS IMPULSION SINGLE WAFER RAL LOCKSWITCH 8-RAL-003



LOCK MOVEMENT

Key 'A' – Movement 60° ACW from key entry
 Key 'X' – Movement 60° ACW and 60° CW from key entry
 Key 'Z' – Movement 60° ACW and 120° CW from key entry
 Key 'P' – Movement 60° ACW and 180° CW from key entry
 Key free available at key entry and Position 'A' only.

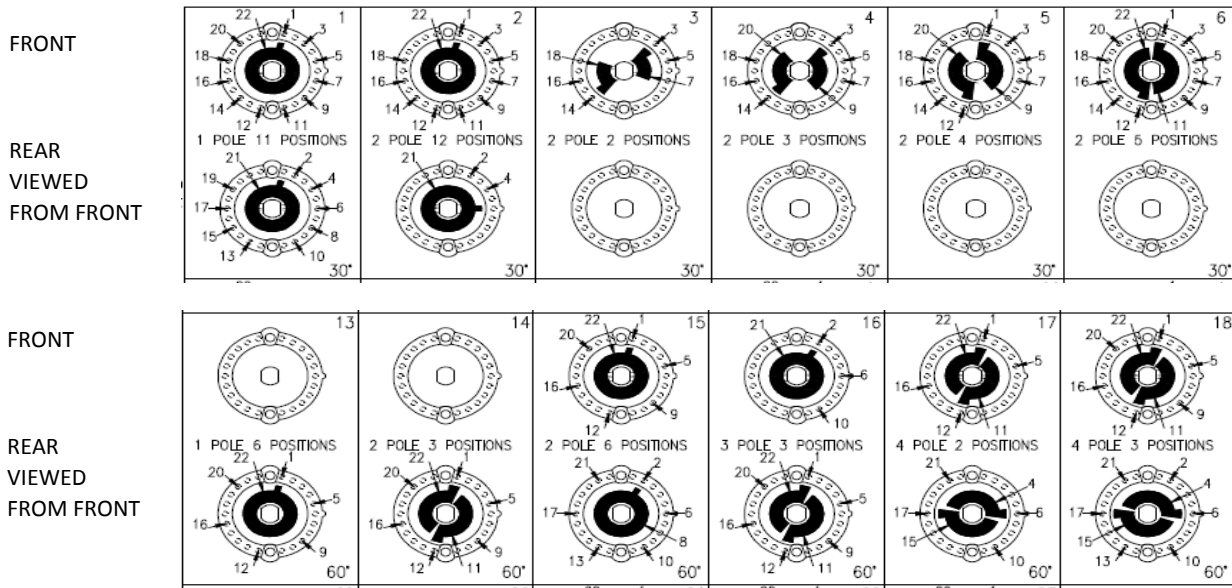
8-RAL-003
 Keys free at Key entry position 1 and position A (11)

STANDARD CIRCUITRY AND KEY WITHDRAWAL POSITION

INDEX ANGLE	STANDARD CIRCUITS NON SHORTING CONTACTS SOLDER TERMINALS						TOTAL SWITCH MOVEMENT
	1 POLE	2 POLE	3 POLE	4 POLE	5 POLE	6 POLE	
30°	2 WAY	2 WAY	2 WAY	2 WAY	2 WAY	2 WAY	0°-30°
	3 WAY	3 WAY	3 WAY	3 WAY	3 WAY		0°-60°
	4 WAY	4 WAY	4 WAY	4 WAY			0°-90°
	5 WAY	5 WAY	5 WAY				0°-120°
	6 WAY	6 WAY					0°-150°
	7 WAY	7 WAY					0°-180°
	8 WAY						0°-210°
	9 WAY						0°-240°
	10 WAY						0°-270°
	11 WAY						0°-300°
	12 WAY						0°-330°
						0°-360° No Stop	
60°	2 WAY	2 WAY	2 WAY	2 WAY	2 WAY		0°-60°
	3 WAY	3 WAY	3 WAY	3 WAY			0°-120°
	4 WAY	4 WAY					0°-180°
	5 WAY	5 WAY					0°-240°

Key Free at
position 1

TYPICAL WAFER LAYOUTS 30° AND 60°



WAFERS ABOVE ARE VIEWED FROM THE FRONT OF THE SWITCH IN THE FURTHEST COUNTER CLOCKWISE POSITION.

CIRCUITRY IS SHOWN AS BREAK BEFORE MAKE (BBM) NON-SHORTING.
MAKE BEFORE BREAK (MBB) OPTIONS ARE ALSO AVAILABLE

ORDERING CODES

PLEASE CONTACT US WITH YOUR REQUIREMENTS

